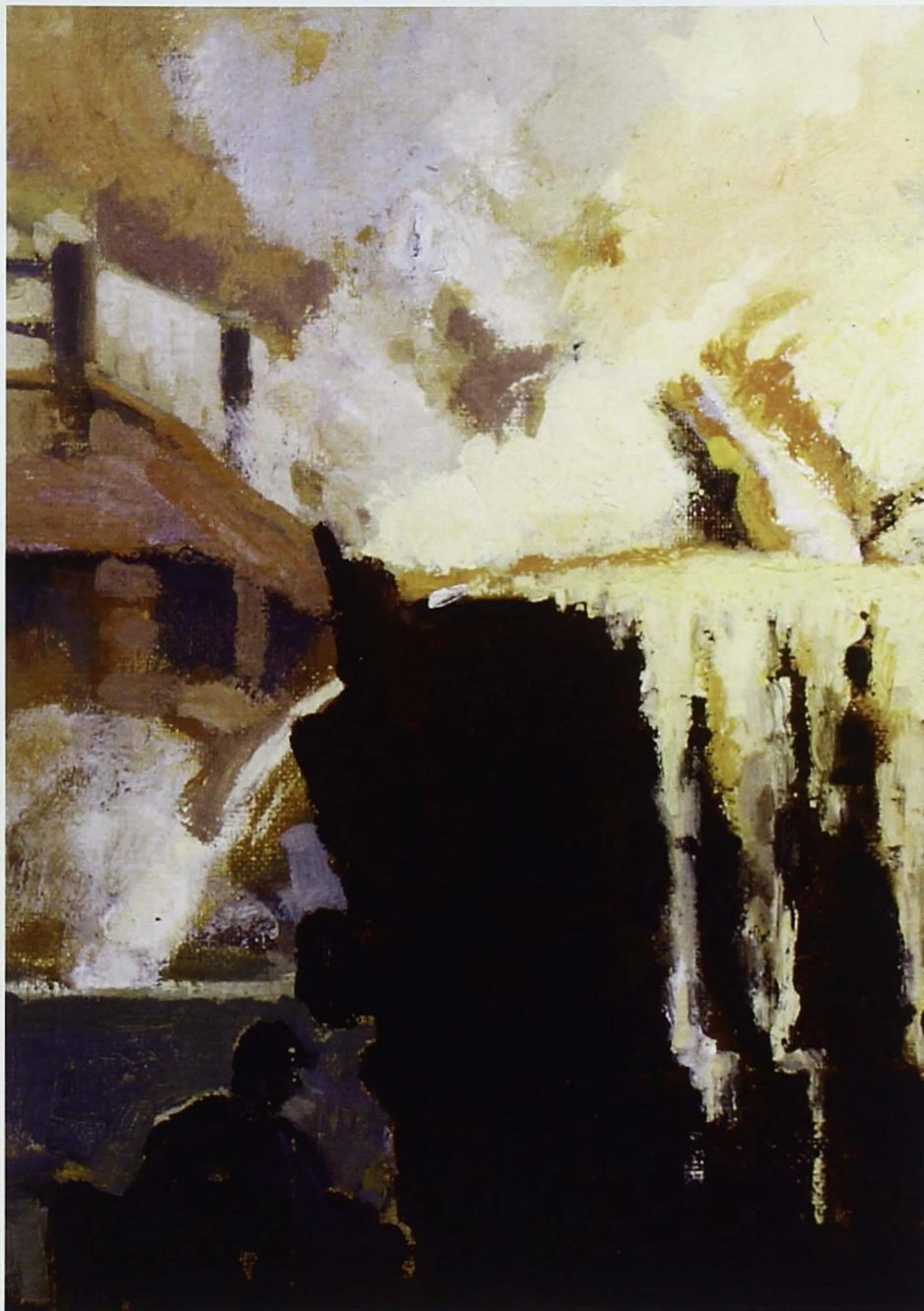


EMS MUSEUM & ART GALLERY ANNUAL REPORT

FOR THE ACADEMIC YEAR 2007-2008



COLLEGE OF

EARTH AND MINERAL SCIENCES



EMS MUSEUM & ART GALLERY ANNUAL REPORT

FOR THE ACADEMIC YEAR MAY 2007–APRIL 2008

RUSSELL WM. GRAHAM
DIRECTOR

AND

JULIANNE SNIDER
ASSISTANT DIRECTOR

MAY 23, 2008

*On the cover: Walter Emerson Huber, Tapping the Heat: Central Iron and Steel Co. (detail),
c.1936, EMS Museum & Art Gallery Steidle Collection*

MISSION STATEMENT

The mission of the Earth and Mineral Sciences Museum & Art Gallery is to preserve the collections of the College of Earth and Mineral Sciences, to enhance the quality of life for the students and staff of the Pennsylvania State University and the community in central Pennsylvania, by serving as a resource for informal science education, fostering a sense of curiosity about the natural and cultural world around us, and instilling responsibility in all people to make our world a better place

DEAN

William E. Easterling

MUSEUM ADVISORY BOARD

Mark Patzkowsky, *Chair*

Lisa Brown

Ted Daeschler

Joe Drahuschak

Pam Francis

Peter Hearney

Paul Howell

Jonathan Mathews

George Milner

John Passaneau

Howard "Chip" Steidle, Jr.

Jennifer Theiss

Bill Welch

Sean M. Miller, *Ex Officio*

"You Guys [Juli and Russ] are great. Thanks for taking the time to answer my questions. It's not so much people like me that ask questions that help your profession, it's the attention that we get when we do ask. This is actually not the response I had expected but, certainly more than I had hoped for. Please keep me in mind if you need volunteers on upcoming digs, as this kind of thing absolutely fascinates me.

Thanks again for all your help, you are both a great credit to your field."

—Cody Wynne, Superintendent, HBN Group, Rockville, Maryland, via email

INTRODUCTION

This year has been a very exciting one for the EMS Museum & Art Gallery. First, the Museum has moved its collections into a new Collections, Education and Research Center (CERC). This facility is equipped to maintain rigorous environmental controls for the collections. All of the Museum's collections are in one area for the first time in a long time. CERC also provides work area for the collections and the development of exhibits. It has office space for Russ and Juli. Future plans include specialized educational activities at CERC.

The 'Hood is an exhibit developed by Julianne and derived from the Steidle Art Collection. It depicts the living conditions of blue collar workers in the mineral industries during the first half of the 20th century. The exhibit has been enhanced by photographs of housing and families during this era as well as by data on income and expenses. These supplementary materials were obtained from the Pattee-Paterno Library Archives.

Perhaps the greatest growth in the EMS Museum & Art Gallery this year has been in programming. We had a special program, Dino Day, on a Saturday that focused on an audience of families with children. It was extremely successful with about 260 people visiting the museum between the hours of 11:00 am–3:00 pm. The Museum co-hosted a popular lecture on "Noah's Flood" with the Jewish Studies Center at PSU. We continued our efforts in collaborative programs with the Department of Geosciences and the NMS. School groups continue to visit the museum, especially in the spring. In addition, Russ has delivered numerous programs at local schools. In fact, outreach is growing so fast, it will be necessary to train graduate students to take part in order to meet demands.

Russell Wm. Graham, Director



Photo courtesy John E. Simmons

Museum visitor looking at EMS Museum & Art Gallery exhibit of dinosaur fossils that includes a Diplodocus vertebra (foreground)



Aaron Harry Gorson, Bessemer Blow at Night, c.1936, EMS Museum & Art Gallery Steidle Collection.

COLLECTIONS

MOVE TO COLLECTIONS, EDUCATION, AND RESEARCH CENTER (CERC)

The most exciting news for the EMS Museum & Art Gallery collections is that we have moved to our new space in the Special Services Building. We have named this space the Collections, Education and Research Center or CERC. The large room where the collections are housed has been renovated and a heating and cooling unit installed, allowing for finely controlled environmental conditions. Windows, as other openings into the room, have been sealed, facilitating environmental stability. A security system provides 24 hour protection. It took three and a half days to move the collections and months of time for preparation. Now, all of these collections need to be unpacked and put in their storage units.

Not all collections could be moved at this time. There are still some rocks, minerals and miscellaneous items that are in the basement of Deike Building. Once we have cataloged this material, it should be ready to be moved some time in summer. However, the collections range at CERC is nearly full. The next phase in upgrading collections storage is to have a survey done by a professional conservator. It will then be possible to develop grants to buy appropriate storage materials (cabinets, racks, shelving, compactors, etc.) for the various collections. Our plan is to submit a proposal to the Institute of Museum and Library Studies (IMLS) in December 2009 for a collections survey.

SUSAN DALTON MINING LAMP COLLECTION

The EMS Museum & Art Gallery has received several nice donations this year. Norm and Alice Rubash donated the Susan Dalton Mining Lamp Collection which contained more than 100 mining safety lamps that are well documented. The collection contained numerous publications that further document it and will facilitate documentation of our previous mining lamp collections.

In addition to the collection, Norm and Alice made a monetary donation that has been used for cataloguing and exhibiting the collection. An exhibit of some pieces from the collection has been installed in the Hosler Building. The Rubash donations will also be used to develop a larger exhibit in the future. These lamps will allow for a potential traveling exhibit on mining safety and related programs.

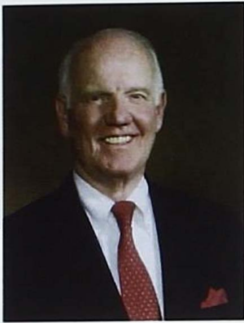
STEIDLE ART COLLECTION

The Steidle Art Collection lost one of its major patrons this year when Edward Steidle, Jr. passed away. Ed was the son of Dean Edward Steidle. He was a great fan of the College of EMS but he took particular interest in the art collection that his father had donated to the college. Some years ago he established a Steidle Art Fund to be used in the care of the collection. Throughout his life, he and other members of the family continued to contribute to this fund. In fact, several substantial donations, in memory of Ed, were made this year by his sister-in-law, Ann Steidle, Howard Steidle, Sr.'s wife, and the Columbus Foundation, established by Ed and his wife.



Edward Steidle, Jr.

Progress is being made on the "Steidle Volume," which is a catalogue of the collection. It contains a history of the collection by Eric Schruers, an overview of the Industrial Art venue by Betsy Fahlman, an annotated catalogue by Betsy and Eric and an appendix listing the entire collection by Julianne Snider. This volume will be published and available to the general



Howard Steidle, Sr.

public in early fall 2008. Once the volume is published the catalogue listing with thumb-nail photos will be placed on-line.

The EMS Museum & Art Gallery and the Centre Furnace Mansion are planning a one day symposium that will focus on the Steidle Collection and the industries that it represents. The symposium is planned for spring 2009. There will be a special signing event for the catalogue and an exhibit dedicated to the "GEMS" of the Steidle Collection.

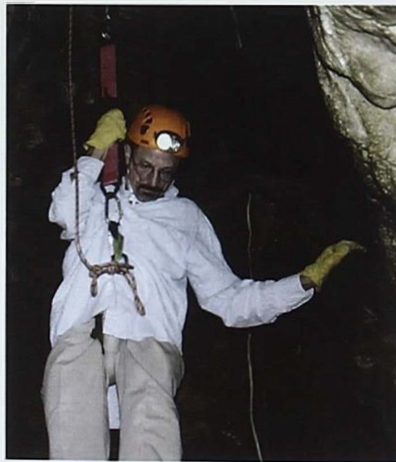
LOANS, IDENTIFICATIONS, QUESTIONS AND CONSULTATIONS

The EMS Museum & Art Gallery maintains an active loan program. Specimens and pieces of art are loaned to other institutions for exhibit and educational purposes. In addition, specimens are provided to faculty and students for their research projects. Two Geoscience students and three Material Sciences and Engineering students used museum collections for their Senior Theses this year and one graduate student in Anthropology received a loan for her doctoral research. Specimens were provided to two faculty members for their research. Several loans were made to faculty and students for classes and outreach. A variety of people either photographed specimens in the collection or requested photographs of specimens from us.

Staff at the Museum & Art Gallery provide services to the general public, primarily by identifying specimens for them or answering questions about scientific and artistic issues. In some cases, we may consult with other institutions or professionals to help them with collections management and preservation as well as information for exhibits and programs. Our work in this area continues to grow every year as more people learn about the Museum.

ADJUNCT CURATOR

The EMS Museum & Art Gallery added an adjunct curator to its auxiliary staff this year. John Simmons was the Director of the Museum Studies Program at the University of Kansas and a collection manager at the University of Kansas Natural History Museum and Biodiversity Research Center for 26 years. He is now an independent museum consultant. John moved to State College in August 2007 and was appointed adjunct February 2008. John brings a plethora of skills and knowledge to the EMS Museum & Art Gallery.

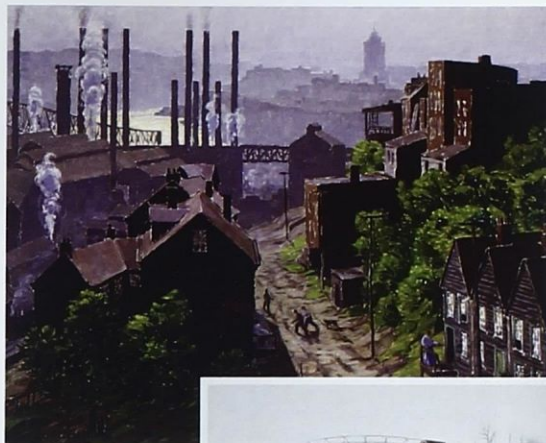


John Simmons, Adjunct Curator, descending into Parker's Pit, South Dakota

EXHIBITS

THE 'HOOD

This exhibit was put together and hung by Julianne Snider, Assistant Director for Exhibits and Collections. It focused on the neighborhoods of the blue collar workers of the first half of the 20th century. Pieces of art were selected from the Steidle Collection to illustrate neighborhoods primarily in coal mining and steel industry communities. In addition, Julianne conducted research in the labor archives of the Pattee-Paterno Library. She selected photographs of people and their actual neighborhoods to be compared and contrasted with the art work. Data collected during surveys of these communities by the Federal Government yielded information on salaries and expenses of the families. This information was displayed and it placed everything in the perspective of the real world. Illustrated maps depicted "aerial" views of some of the towns. Of particular interest was Homestead PA, site of the infamous and deadly showdown between steel workers and Pinkerton men hired by the Carnegie Steel Company.



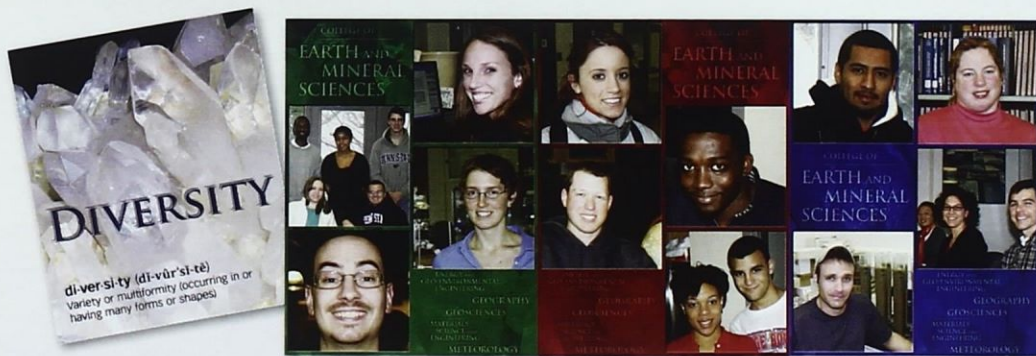
Christian J. Walter, Pittsburgh, c.1937, EMS Museum & Art Gallery Steidle Collection (top); photo image from United Mine Workers 1944 survey of coal miners' living conditions (bottom).

Courtesy of PSU Special Collections Library

COLOR OF MINERALS AND DIVERSITY

The EMS Museum & Art Gallery was invited to exhibit some of its collections in the HUB, the PSU student union. The exhibit focused on the color of minerals. This exhibit gave us an opportunity to display some of our spectacular mineral specimens as well as provide scientific information about why certain minerals have their color. There were six cases of minerals distributed throughout the HUB. It was an extremely popular exhibit and the Museum was asked to maintain it for several extra months beyond the normal schedule.

As part of the HUB exhibit, one case was devoted to diversity in minerals and humans. The mineral quartz has a specific chemical composition and crystalline structure. However, it can be found in various colors (white, clear, pink, yellow, purple, smokey, etc.), different crystal and non-crystal shapes and sizes. Photographs of many different people within the EMS College were used to illustrate the diversity of humans.



Graphics panels from Diversity exhibit.

HUBERT "HU" AND MARY BARNES ENDOWMENT

Drs. Hubert and Mary Barnes gave a substantial endowment to the EMS Museum & Art Gallery this year. Part of this money will be invested and the income generated will be directed towards various activities in the museum. Another part of the endowment will be used to purchase new state-of-the-art exhibit cases for the Art and Mineral Gallery. The cases have been specifically designed for the EMS Museum & Art Gallery. They will be constructed of cherry wood and glass with their own internal track lighting. Each case will be about six feet tall and viewable from three sides.



Hu and Mary Barnes.

These cases will allow for more dramatic exhibition of some of our most beautiful mineral specimens and will establish a more professional look for the museum. The cases will facilitate mineral education because each case will have two plexiglass covered drawers. Each drawer will contain minerals representing a specific group within the Dana classification system.

NITTANY MINERALOGICAL SOCIETY CASE



Panel from The State College Oolite exhibit.

The EMS Museum & Art Gallery has decided to devote one case to the Nittany Mineralogical Society (NMS) for displays. The Museum and NMS have a long tradition of working together. The exhibit in the NMS case will be designed and constructed by its members. NMS is responsible for finding the specimens, developing the graphics and writing the scientific content. Julianne helps with printing of labels, graphics, text and installation. This will be a continually changing exhibit.

Their first exhibit was on the State College Oolite which is a local rock with a unique structure. Because of this structure, the oolite is a common rock used by lapidarists. The structure was also studied by several eminent geologists in the Department of Geosciences at PSU. These studies showed that the rock had a very complex history.

GEO WALL

Chuck Anderson has continued to develop the EMS Museum GeoWall as a major interactive exhibit that is quite popular with museum patrons. Chuck has used text to explain features that people view on the GeoWall. Such a development may seem simple to most of us but the EMS Museum GeoWall is the only one in the nation, if not the World, to have this feature. It makes the GeoWall a self-contained educational instrument. Using text and some additional programming the GeoWall is menu-driven. Patrons can now easily select what they would like to view and follow different pathways to learn more about specific topics. Chuck has also installed new exhibits on the GeoWall. One of particular interest is three-dimensional images of two dinosaur skulls, *Velociraptor* and *Deinonychus*. Tim Robinson digitized the images and Chuck installed them.

THE SUSAN B. DALTON MINING LAMP COLLECTION : LIGHTS OF LIFE

This exhibit has been specially created for the Department of Energy and Mineral Engineering. It focuses on a recent donation to the Museum and provides a brief history in the development of mining lamps. The exhibit is augmented by mining lamp publications as well as by rocks, minerals and fossils from the EMS Museum & Art Gallery collections. It is a temporary exhibit and will be replaced by a more permanent one thanks to a monetary donation by Norm and Alice Rubash. Stay tuned!!!



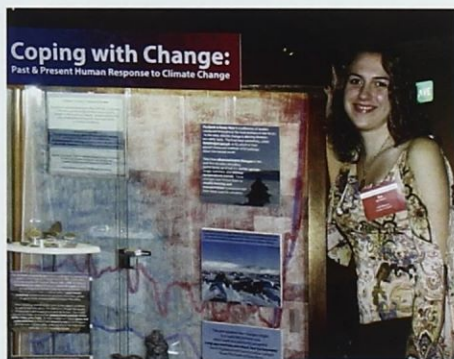
Detail from Mining Lamps: Lights of Life installed in Hosler Building.

MATERIALS SCIENCE, DINOSAUR LEG AND GLOBAL CHANGE

Mike Fleck from the Department of Material Sciences and Engineering developed an exhibit on nano-materials and it was put on display this spring. The exhibit shows the variety of ways nano-technology improves the quality of life for humans. These technologies range from small electronic circuits to cancer hunting and killing cells in medicine.

For many years, the Museum had an articulated rear leg of *Diplodocus*, a sauropod (long neck) dinosaur, on exhibit in the Steidle Building. The leg has been moved to the galleries in Deike. In the process of moving the femur (upper leg bone) it separated into three pieces along old break lines. The bone had been broken previously, probably shortly after it was buried. The old adhesive used to hold these pieces together had deteriorated and failed. Museum volunteers are now hardening the bone and will glue it back together. The leg will be part of an exhibit on "How Do You Measure Up." It will give kids, and some of us child-like adults as well, a chance to compare our heights to that of one of the big dinosaurs.

A new exhibit on Global Change was installed this year. It was part of Katherine "Kat" Hinkel's Senior Thesis. Kat completed a double major in Geosciences and Anthropology. She was interested in how climate change had affected people in the past and how it will affect them in the future. To this end, she focused her research on the Anasazi Culture of the southwest (past change) and the Inuit (Eskimo) of today. She designed, created and installed the exhibit with help from Julianne, Richard Alley, Clair Milner (Anthropology) and Russ. Kat is now pursuing a masters degree in Museology at Leicester, one of the premiere programs in the World. Kat had volunteered and worked for the EMS Museum & Art Gallery during her undergraduate years at PSU.

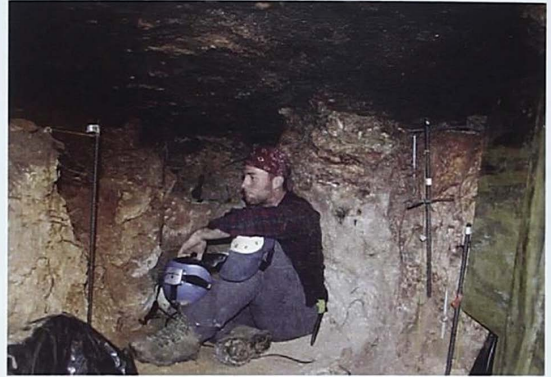


Katherine "Kat" Hinkel and her exhibit Coping with Change based on her senior thesis topic.

PROGRAMS

BLACK HILLS CAVE PROGRAM

For the last three years, Russ and Juli have taken small groups of EMS students to the Black Hills of southwestern South Dakota to excavate fossils from caves. The program gives students hands-on experience and builds self confidence in collecting scientific specimens and data. They learn about the geology and natural history of the Black Hills. Collections derived from this activity are used by Russ for his research on biogeography and climate change. These samples are used by graduate and undergraduate EMS students for research for their theses. The fossil collections also play roles in EMS Museum & Art Gallery programs like SEEMS and Shake, Rattle and Rock (see below). The fossils have been used in exhibits.



Alex Bryck (undergraduate in Geosciences) examining stratigraphy in Parker's Pit excavations, South Dakota.

SEEMS

SEEMS (Summer Experience at EMS) is a special program for high school students from inner-city schools. It is supported by grants to Tanya Furman (Geosciences). Students are brought to the University Park campus for several weeks to work with scientists in their research programs. The EMS Museum & Art Gallery sponsored five students who assisted Russ with his research on climate change and vertebrate faunas from the Black Hills of South Dakota. Laurie Eccles was the student assistant. Laurie has worked with Russ on this project in both the field and laboratory.

Russ provided several background lectures on the project and vertebrate paleontology. Students were then given their own matrix samples from separate excavation levels from one of the SD caves, Don's Gooseberry Pit. Each student then picked bones and teeth from the matrix. With assistance from Laurie and Russ, the students learned how to identify the bones and the teeth. Each student then counted all of the bones in different bone type categories and made a list of the species they had identified. They shared their list with the others and the class compiled a research database in EXCEL, a computer program. Working as a team, the students then did simple statistics to determine if their individual samples as well as the total sample were biased. After obtaining these results, the class prepared a power point presentation

that they gave to all participants in the SEEMS Program.



2007 SEEMS students with Laurie Eccles (undergraduate in Geosciences) (left), and Russ Graham (right)

DINO DAY

Dino Day was a special program that was held by the EMS Museum & Art Gallery in conjunction with the *Walking with Dinosaurs* hosted by the Bryce Jordan Center. The Museum had special exhibits on dinosaurs supplemented by student docents with carts of specimens that they showed and explained to the public. There were three special lectures on different aspects of dinosaurs that were given by PSU paleontologists. Visitors were able to see and touch the *Diplodocus* femur that was exhibited on a table. Three-dimensional images of the skulls of *Velociraptor* and *Deinonychus* were shown on the GeoWall.

Dino Day was held on a Saturday and it was a huge success with about 260 people visiting the museum. Of special interest, most of the visitors were families with children, an audience that does not frequently visit the museum. Given the success of the program, the Museum will host similar programs on different topics next year.



Visitor at GeoWall during Dino Day program (above); event poster (right).

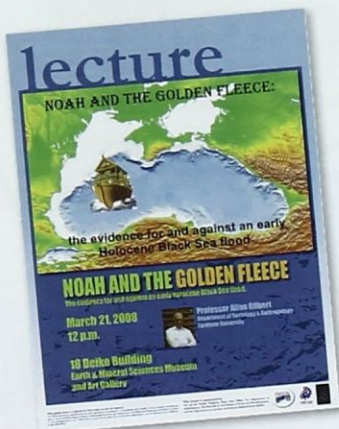


Photo courtesy John E. Simmons

NITTANY MINERALOGICAL SOCIETY PROGRAMS

The EMS Museum & Art Gallery collaborated with the NMS on several programs. At the Rock and Mineral Show hosted by NMS, Russ and Juli presented two separate, but related, programs. Russ talked about the lifeways and extinction of mammoths and mastodons. Juli gave a presentation on the history of displaying mastodon and mammoth skeletons in museums. The NMS hosts Junior Education Day where children visit different stations and learn various aspects about geology and related sciences. The EMS Museum & Art Gallery had a table on vertebrate fossils. Russ and two student volunteers, Laurie Eccles and Melissa Pardi, explained fossils to the children. There were about 360 kids accompanied by parents who participated in the activity.

NOAH'S FLOOD AND THE GOLDEN FLEECE



Poster announcing the lecture Noah and the Golden Fleece.

In conjunction with the Jewish Studies Center of PSU, the EMS Museum & Art Gallery sponsored a special lecture by Dr. Allan Ginsberg from the Department of Anthropology at Fordham University in New York City. The pros and cons for the scientific hypothesis that Holocene flooding of the Black Sea by the Mediterranean through the Bosphorus Straits gave rise to the myth of Noah's Flood was the topic of this lecture. It was delivered to a standing-room-only audience in the Art and Mineral Gallery. The audience was drawn from a diverse spectrum of disciplines (Geosciences, Anthropology, Classics, Geography, Jewish Studies, etc.). The lecture stimulated spirited discussion at the end.



Photo courtesy John E. Simmons

David Moscato (undergraduate Geosciences) talking with visitors about fossils at Exploration Day.

EXPLORATION DAY

Originally, Space Day focused outreach activities throughout the PSU campus on the Space Sciences. Exploration Day has replaced Space Day and it is now a campus-wide outreach program for all PSU sciences. The EMS Museum & Art Gallery prepared a program on fossils for Exploration Day. It was facilitated by graduate and undergraduate students as well as the EMS Museum staff. Students and Russ explained invertebrate and vertebrate fossil specimens to Explor-

ation Day visitors in the HUB. A large femur of the dinosaur, *Diplodocus*, was a great attraction.

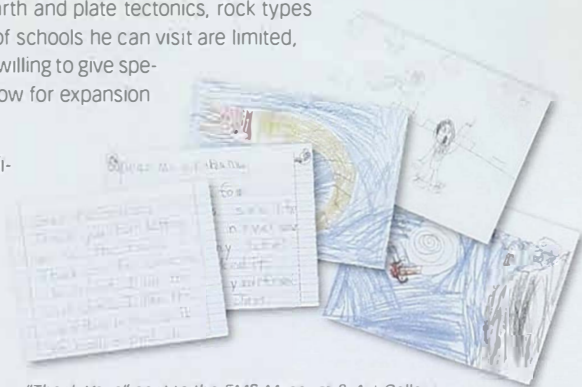
In addition, Julianne Snider, Assistant Director, and John Simmons, Adjunct Curator, helped visitors make plaster casts of "fossils" which were actually facsimiles of fossil organisms (e.g., trilobites, ammonites, etc.). This activity was quite a hit as many of those wanting to make casts were definitely several decades beyond their grade school years! It is estimated that about 1200 people participated in Exploration Day. Julianne had to buy extra plaster in the PSU Book Store because of the popularity of the fossil casting activity.

SHAKE, RATTLE AND ROCK & OTHER SCHOOL PROGRAMS

Shake, Rattle and Rock (SRR) is a multi-day outreach program sponsored by the Department of Geosciences at PSU. The EMS Museum & Art Gallery has participated in this program for the last four years. Like the NMS's Junior Education Day, SRR is composed of different stations the students visit to do various activities related to geology. The EMS Museum & Art Gallery station allowed students to pick fossil bones and teeth of small vertebrates from matrix that was excavated from caves in SD. EMS Museum & Art Gallery staff (Juli and Russ) and one student volunteer, Laurie Eccles, helped the students identify the types of bones and the types of animals represented by their collection. Each class then made a list of the animals that they found on the blackboard. Laurie and Russ then discussed how the animal bones and teeth got into the cave and what types of environments they represented. Russ then led a discussion about global change and its possible impacts on animal populations.

The EMS Museum & Art Gallery is a popular destination for school tours. Many times we lead guided tours for the groups and other times they take themselves through the Museum. The EMS Museum & Art Gallery has an active program where Russ will visit schools and make presentations on various topics. This year he talked primarily about the deep structure of the earth and plate tectonics, rock types and fossils. Because Russ's time and the number of schools he can visit are limited, he hopes to train graduate students who would be willing to give special programs to the schools. This approach will allow for expansion of outreach to a school aged audience.

The school presentation program has grown significantly in the past two years. For example, last year Russ gave a special program on "Reading the Rocks" to eighty students at the Foot of Ten Middle School in Holidaysburg, PA. The purpose of this program was to use geology to get students interested in reading books.



"Thank You" sent to the EMS Museum & Art Gallery by classroom visitors.

ACHIEVEMENTS

STAFF

Russell Wm Graham, *Museum Director*
(April 2004–Present)

Julianne Snider, *Assistant Director*
(January 2006–Present)

John Simmons, *Adjunct Curator*
(March 2008–Present)

Sean Miller, Development, Part Time

Reita Rockey, Office Manager, Part Time

STUDENT EMPLOYEES

Brett Ashely

Alex Bryck

Laurie Eccles

Matt Mowry

Dieu Thanh Truong

CONTRIBUTING EMS STAFF

Richard Alley (Geosciences)

Sridhar Anandkrishnan (Geosciences)

Chuck Anderson (Earth and Environmental Systems Institute)

Ken Biddle (EMS Shop)

Roger Cuffey (Geosciences)

Bill Diehl (EMS Shop)

Mike Fleck (Materials Science and Engineering)

Bill Genet (EMS Shop)

Peter Heaney (Geosciences)

Kelly Henry (EMS)

Paul Markosky (Meteorology)

Tim Robinson (EMS)

Morgann Stephenson (EMS)

Tim White (Earth and Environmental Systems Institute)

Peter Wilf (Geosciences)

STUDENT VOLUNTEERS

Tom Arnold

Alex Bryck

Laurie Eccles

Ben Fullerton

Kathleen Gallagher

Steve Jasinski

Rosemary Lanzara

David Moscato

Melissa Pardi

EXHIBITS

- 6/1 *The "Hood"*—Steidle Collection art exhibit on neighborhoods of blue collar workers in the first half of the 20th century
- 6/2 State College Oolite Exhibit (Nittany Mineralogical Society)
- 6/15 Global Climate Change Exhibit
- 2/15 Materials Science Exhibit
- 3/18 Diversity Exhibit
- 3/20 *Diplodocus* leg
- 3/20 Three dimensional reconstructions of *Velociraptor* and *Deinonychus* skulls for the GeoWall



Paleontologists Peter Wilf (center), Mark Patzkowsky (left) and Russ Graham (right) talking with visitors during Dino Day

Photo courtesy John E. Simmons

TRAVELING EXHIBITS

10/1	Color of Minerals	HUB—Robeson Center
12/30	Global Change	HUB—Robeson Center
2/19	Global Change	HUB—Robeson Center

NEW ACQUISITIONS

5/20	"Iron Ore" from PA	Denny Walizer
5/24	Florida vertebrate fossils	Florida Prehistory Class
6/4	Modern bat	Tim White
8/21	Horse skeleton	Owen and Lois Murphy
8/21	Bison skeleton	Custer State Park
8/21	Rodent and Lagomorph skeletons	Black Hills Expedition
8/21	Parker Pit Fossils	Black Hills Expedition
8/21	Don's Gooseberry Pit Fossils	Black Hills Expedition
10/24	Two skulls & two jaws of <i>Ovis aries</i>	Hall's Cave Texas
12/1	Skulls/casts from Skulls Unlimited	Purchase
2/1	Susan Dalton Mining Lamp Collection	Norm and Alice Rubash Donation
4/10	Modern osteological specimens	Shirley Fonda

LOANS

6/9	Stage Props	PRI <i>What d'ya know</i> live show
6/15	Westmoreland Museum of American Art	Henry Varnum Poor Painting
7/15	Provided six images from Steidle Collection	Geography Teacher Workshop
7/15	Provided Coal is King Poster	Geography Teacher Workshop
7/30	Paul Howell (PSU MATSE)	Meteorites for research
7/31	Brenda Frazier (PSU Anthropology)	Research specimens
9/10	John Hellman	Paintings
3/16	Gems	Peter Heaney for class
3/27	Quartz for research	Hu Barnes



Photo courtesy John E. Simmons

Student volunteers screen washing cave sediments for fossils from Parker's Pit excavations in South Dakota

PHOTO IMAGES

8/25	Michael Daschbach	Copy of A.C. Daschbach Painting
6/15	Westmoreland Museum of American Art	Image of Henry Varnum Poor painting
2/25	Bruce Gottlieb	Photos of minerals
4/22	John Krenzel	Mining lamps

IDENTIFICATIONS, QUESTIONS & CONSULTATIONS

5/20	Ulli Limpitslaw (UNC)	Bison teeth & bones
5/28	Ulli Limpitslaw (UNC)	Artiodactyl jaw
6/6	Jamie Kurek—Nevada	Trilobite
6/7	John Gergel—Harrisburg	<i>Arthropycus</i>
7/6	Bill Pappa	Slag (presumed meteorite)
8/1	Sandra Edwards (U of Arkansas)	Charles Dutton art
8/15	Steve Lowery	Rock (presumed meteorite)
8/21	Bob Hershey (Consulting Geologist)	St Clair Plant Fossils
8/24	Curtis Miner (PA State Museum)	PA Museum Extension Project
8/24	Michael Chobot—northern PA	Sandstone with Iron staining
9/24	Darold Lowe	<i>Lepidodendron</i> imprint
10/24	Alan Scaroni	<i>Stigmaria</i> mold
11/26	David Cunningham	Questions about museum
12/11	Bruce Gotleib	Mineral Identification
1/10	Brian Caldwell	Art History Question
1/10	Cody Wynne (Maryland)	Trace fossil— <i>Arthropycus</i>
1/15	Bob Glotzhober (Ohio Hist. Soc.)	Walrus tusk
1/16	Susan Rodabaugh	Slag (presumed meteorite)
1/16	Kelly Henry for neighbor	Obsidian
1/21	John Mullen (State College)	Gold separation
2/7	John Washburn (Lincoln Orbit Earth Science Society)	Fossils
2/25	Andrew Huddles	Sculpture of <i>Cervalces</i>
2/28	Gayle Yates	Rock Collection
3/3	Suzi bender (State College)	Muscovite question
3/3	John Carrol	Mineral Identification
3/8	Matson Anthropology Museum	Exhibits
3/18	National Geographic Society	Pleistocene extinctions
3/19	Mike Fleck	Exhibit cases
3/27	Brian Meyers (State College)	Quartz
3/30	National Geographic filming	Pleistocene extinctions
3/31	Phone call	Referred to Anthropology
4/1	Jack Halpern (Williamsburg)	Carbonate geology (referred to PSGS)

4/1	John Carrol	Aragonite
4/5	Zane Renzo	Slag (presumed meteorite)
4/8	Teresa Conway	Concretion
4/8	Brian Caldwell	Art question
4/15	Susan Schwartz	Glass Museum
4/17	Patricia Toskas	Mineral sales
4/17	Amy Meyer	Mineral collecting for kids
4/21	Mr Kriner (Williamsport)	Hematite (presumed Meteorite)

TOURS & PROGRAMS

6/6	Howard Elementary School	18
10/24	State College High	40
10/15	Clearfield County Alternative Education School (high school)	18 (morning)
10/15	Clearfield County Alternative Education School (high school)	12 (afternoon)
10/19	Galeton High School, 9th grade	40
10/29	PSU Museum Consortium	8
1/8	State College Fifth Grades (Shake, Rattle and Rock)	150
1/9	State College Fifth Grades (Shake, Rattle and Rock)	75
1/10	State College Fifth Grades (Shake, Rattle and Rock)	62
2/10	Struble family	7
2/15	EMS EMEX (New students and their families)	35
2/20	Geobiology Class—Fossils	28
2/24	Patzkowsky family	3
2/29	State College Artists group	4
3/3	PA JSHS (High School Students)	45
3/21	Noah's Flood & the Golden Fleece (Allan S. Gilbert—Fordham Univ.)	65
3/22	Dino Day	260
3/22	Dinosaurs Through the Ages (Cuffey)	25
3/22	Feathered Dinosaurs, Birds and Pterosaurs (Graham)	20
3/22	What Dinos Ate (Wilf)	35
4/5	NMS Jr. Ed Day	348
4/8	CSATS	11
4/20	Blair County Girl Scouts	18
4/24	Sons & Daughters	62 (three groups)
4/27	Exploration Day	ca 1200

SCHOOL VISITS

1/18	Earth structure, (5th grade) Pine Grove Mills	92 (Three classes)
3/20	Reading Rocks for Foot of Ten Middle School (Holidaysburg)	85
3/27	Fossils (2nd & 3rd grades), Lemont Elementary	125 (Six classes)

MUSEUM PRESENTATIONS & PROGRAMS

6/1	NMS Gem Show	Juli & Russ
10/6	Whitaker Center	Chuck Anderson, GeoWall
11/14	PSU Amateur Archaeology Society	Russ
2/23	Biogeography Class lecture	Russ
2/24	Biogeography class lab	Russ and Melissa Pardi
2/29	Biogeography class lab	Russ and Melissa Pardi
3/3	PA JSHS (High School Students)	Chuck Anderson, GeoWall
4/5	NMS Jr Ed Day (Fossils)	Russ, Laurie Eccles & Melissa Pardi

PROFESSIONAL PRESENTATIONS

- Graham, R. W. 2007. Implications for taphonomy and paleoecology of paired caves, Parker's Pit and Don's Gooseberry Pit, from the Black Hills of South Dakota. *Program and Abstracts, Plains Anthropological Conference, Rapid City, SD*: 41-42.
- Graham, R. W. 2007. The role of non-analog biotas in the terminal Pleistocene extinction. *Journal of Vertebrate Paleontology Supplement to No. 3*: 84A.
- Pardi, M. 2007. Taphonomy of two horizons from Don's Gooseberry Pit, Black Hills, South Dakota. *Program and Abstracts, Plains Anthropological Conference, Rapid City, SD*: 76-77.
- Semken, H. A., Jr. and R. W. Graham 2007. AMS 14C analysis of non-analog (Disharmonious) faunal components from cave deposits in the southeastern United States. *Journal of Vertebrate Paleontology Supplement to No. 3*: 144A.
- Simmons, J.E., and J. Snider 2007. Observation and Distillation: Preservation, Depiction, and the Perception of Nature, in *The Herpetological Legacy of Linnaeus: A Celebration of the Linnaean Tercentenary, 2007 Joint Meeting of Ichthyologists and Herpetologists, Saint Louis, MO*

PROFESSIONAL TRAINING & MEETINGS

Julianne Snider	Society of American Archivist workshop
Julianne Snider	Society for the Preservation of Natural History Collections annual meeting
Julianne Snider	Small Museums Association annual meeting
Julianne Snider	PastPerfect training workshop
Russell Graham	PastPerfect training workshop
Russell Graham	Plains Conference annual meeting
Russell Graham	Society of Vertebrate Paleontology annual meeting
Julianne Snider	Conservation Center for Art and Historic Artifacts workshop

ACTIVITIES OF ADJUNCT CURATOR, JOHN SIMMONS

- 10/13 Lecture on preserving collections, Staten Island Zoo Amazing Amphibians Day
10/26 Interview broadcast on Studio 360
12/03-08 Instructor, Cuidado y Manejo de Colecciones Biológicas, Universidad de Magdalena, Santa Marta, Colombia
12/09-15 Collection evaluations for Instituto Alexander von Humboldt, Medellin, Colombia
12/2007 Field reviewer, iMLS Conservation Project grants
2/11-13 Instructor, Latin American and Caribbean Collections Management Training Program, Smithsonian Institution
2/24-26 Small Museums Association
4/21-25 Instructor, Curating National History Collections, National Park Service, Museum of the North, Fairbanks, Alaska

PROFESSIONAL AWARDS & RECOGNITION

Russell W. Graham appointed Charter member of the Board of Directors of the Lamb Spring Archaeological Preserve, Douglas County, CO

HOSTED CONFERENCES, WORKSHOPS & MEETINGS

PastPerfect Workshop for training on museum collections software
Campus-wide reception for PSU Museums to enhance collaboration CSAT Meeting (April 8)

PRESS LISTINGS

- 8/1 Centre Daily Times Listing
9/10 Centre Daily Times Color of Minerals Exhibit
9/15 Art Exhibits 2007 HUB-Robeson Galleries Color of Minerals
9/30 AAA Tourbook Listing
10/4 PA Tourism Office Listing
10/5 Daily Collegian Color of Minerals
10/5 Arts News Wire Color of Minerals
11/09 AP Press (Ramit Plushnick Masti) Carnegie Dinosaur Exhibit
11/15 Washington (Times Christian Toto) Mastodon Extinctions
3/19-20 CDT Advertisement Dino Day
3/20 The Collegian Advertisement Dino Day

PROPOSALS SUBMITTED

- 6/7 Patzkowsky NASA EPO Biodiversity exhibit
10/28 IGERT Pre-proposal to PSU Museum Studies Program (with Peter Heaney)

GRANTS AWARDED

NSF Grant to Paul Markowski	Tornado Exhibit
AMQUA Conference Support to PSU Conference Center	\$10,000

CASH DONATIONS

Mrs. Howard Steidle, Sr.
Columbus Foundation
Dianne Mitchel
Bill Martin
PSU Society of Women Engineers
Drs. Hubert and Mary Barnes
Norm and Alice Rubash

MATERIAL DONATIONS

Dr. Hu Barnes	Balance Beam Scale
Norm & Alice Rubash	Mining Lamps
Shirley Fonda	Osteological Specimens

FRIENDS OF EMS MUSEUM & ART GALLERY

Peter & Helen Bannon	Peter Heaney	Jon Nese
Robert Brooks	Paul Howell	John Passaneau
Lisa Brown	James Kasting	Mark Patzkowsky
Ted Daeschler	Paul Knight	Mark Radomsky
Joe Drahuschak	Cathy Lyons	Howard "Chip" Steidle, Jr.
Pam Francis	Jonathan Mathews	Ann Taylor
Kate Freeman	Bill Martin & Dianne Mitchel	Jennifer Theiss
Russ Graham	Sean M. Miller	Alfred & Elizabeth Traverse
Martin Gutowski	George Milner	Bill Welch
Bernd Haupt	Heather & Steve Nelson	

The Pennsylvania State University is committed to the policy that all persons shall have equal access to programs, facilities, admission, and employment without regard to personal characteristics not related to ability, performance, or qualifications as determined by University policy or by state or federal authorities. It is the policy of the University to maintain an academic and work environment free of discrimination, including harassment. The Pennsylvania State University prohibits discrimination and harassment against any person because of age, ancestry, color, disability or handicap, national origin, race, religious creed, sex, sexual orientation, or veteran status. Discrimination or harassment against faculty, staff, or students will not be tolerated at The Pennsylvania State University. Direct all inquiries regarding the nondiscrimination policy to the Affirmative Action Director, The Pennsylvania State University, 328 Boucke Building, University Park, PA 16802-5901, Tel 814-865-4700/V, 814-863-1150/TTY. U ED EMS 09-15



PENNSTATE



EMS MUSEUM & ART GALLERY

The Pennsylvania State University
College of Earth and Mineral Sciences
16 Deike Building
University Park, PA 16802-5000
814-865-6336 (Voice)
814-863-7708 (Fax)
museum@ems.psu.edu